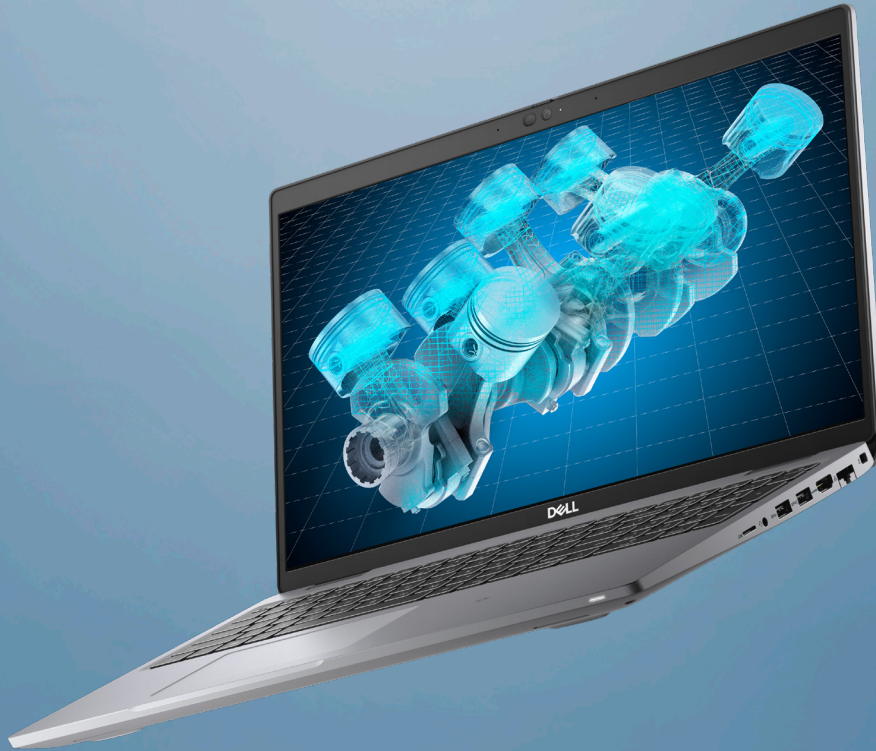


DELL Technologies

PRECISION 3561

Power within reach



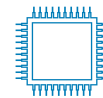
REDESIGNED INSIDE AND OUT

The 3561 has been completely redesigned, from the use of reclaimed carbon fiber and bio-plastics on the outside, to the significant performance features on the inside. The new Pro2 keyboard and larger touchpad provide a great user experience along with up to an UHD (100% sRGB, 400nit display with ComfortView Plus (hardware low blue light) and Dell exclusive PremierColor.



EXCEPTIONAL MOBILITY

Starts at under only 3.95 lbs / 1.79 kg. Also, get an extremely long battery life with an optional 6-cell ExpressCharge battery, and up to 4TB of storage, ExpressConnect to optimize WiFi connectivity, for projects on the go. The latest Thunderbolt 4 and USB ports at well as BlueTooth 5.2, WiFi 6E and optional LTE Cat9 WWAN keep you connected to all the accessories you need. Plus, the proximity sensor, Windows Hello (with IR camera), along with ExpressSign-in helps get you up and running quickly.



INTELLIGENT PERFORMANCE

Maximize your workstation performance with Dell Optimizer for Precision software and featured components including the latest Intel® Core™ or Xeon® 6-core vPro processors, up to 64GB of 3200MHz DDR4 memory, faster Intel integrated graphics and up to T600 and T1200 NVIDIA professional graphics (4GB). Plus, advanced thermals help keep the system running at high speeds longer and more quietly.



DELL OPTIMIZER FOR PRECISION

New Dell Precision workstations feature Dell Optimizer for Precision, which is AI-based software that learns how you work and adapts to your style to create a smarter, more-personal experience. The result? Improved system responsiveness, better application performance, smarter use of battery power, reliable network connectivity, optimized storage as well as reporting and analytics to help identify bottlenecks and other options to improve system performance. All from a single console that you manage from WorkspaceOne or Dell SCCM—allowing IT staff to deploy, configure, update, and monitor Optimizer remotely.

Features & Technical Specifications

PRECISION 3561

Feature	Technical Specifications	Feature	Technical Specifications
Processor¹	Intel® Core™ i5-11400H, 12 MB Cache, 6 Core, 12 Threads, 2.70 GHz to 4.50 GHz, 45w Intel® Core™ i5-11500H, 12 MB Cache, 6 Core, 12 Threads, 2.90 GHz to 4.60 GHz, 45w, vPro Intel® Core™ i7-11800H, 24 MB Cache, 8 Core, 16 Threads, 2.30 GHz to 4.60 GHz, 45w Intel® Core™ i7-11850H, 24 MB Cache, 8 Core, 16 Threads, 2.50 GHz to 4.80 GHz, 45w, vPro Intel® Core™ i9-11950H, 24 MB Cache, 8 Core, 16 Threads, 2.60 GHz to 5.00 GHz, 45w, vPro Intel® Xeon W-11855M, 18 MB Cache, 6 Core, 12 Threads, 3.20 GHz to 4.90 GHz, 45w, vPro	Input	Single Pointing standard Single Pointing backlit Multi-touch Clickpad
Operating System²	Win10 Pro 64 Win10 Home 64 RHEL 8.4 (Web-post only) Ubuntu 20.04	Systems Management	Intel® vPro Technology Enabled No Out-of-Band Systems Management ME Secure Lockout
Memory³	8 GB, 2 x 4 GB, DDR4, 3200 MHz, SO-DIMM 8 GB, 1 x 8 GB, DDR4, 3200 MHz, SO-DIMM 16 GB, 2 x 8 GB, DDR4, 3200 MHz, SO-DIMM 16 GB, 1 x 16 GB, DDR4, 3200 MHz, SO-DIMM 32 GB, 2 x 16 GB, DDR4, 3200 MHz, SO-DIMM 32 GB, 1 x 32 GB, DDR4, 3200 MHz, SO-DIMM 64 GB, 2 x 32 GB, DDR4, 3200 MHz, SO-DIMM *Optional ECC memory for mobile Intel Xeon Processor	Communication Options	No Wireless LAN Card Qualcomm QCA61x4A 802.11ac Dual Band, 2x2, Wireless Adapter + Bluetooth Intel® Wi-Fi 4/5/6 AX201 2x2 .11ax (No Bluetooth), Intel® Wi-Fi 4/5/6 AX201 2x2 .11ax + Bluetooth 5.2, Intel® Wi-Fi 4/5/6E AX210 2x2 .11ax (No Bluetooth), Intel® Wi-Fi 6 AX210 2x2 .11ax + Bluetooth 5.2, Intel XMM 7360 Global LTE-Advanced WWAN
Graphics³	Intel® UHD Graphics NVIDIA T600 w/4GB GDDR6 NVIDIA T1200 w/4GB GDDR6	Multimedia	Dual integrated high quality speakers and dual integrated noise cancelling digital array microphones MaxxAudio® Pro by Waves Optional RGB HD, IR+HD, or FHD+IR+Express Sign-In Camera
Display Options	15.6" HD, 16x9, 1366x768, 220 nit brightness, TN, 45% NTSC, 60Hz, Non-Touch 15.6" FHD, 16x9, 1920x1080, 250 nit brightness, WVA, 45% NTSC, 60Hz, Non-Touch 15.6" FHD, 16x9, 1920x1080, 250 nit, WVA, 45% NTSC, 60Hz, Touch 15.6" FHD, 16x9, 1920x1080, 400 nit, Super Low Power, WVA, LBL, 100% sRGB, 60Hz, Non-Touch 15.6" UHD, 16x9, 3840x2160, 400 nit, Super Low Power, WVA, LBL, 100% sRGB, 60Hz, Non-Touch	I/O Ports and Connectors	Sim card slot (optional) 2x Thunderbolt 4 Type C, 2x USB 3.2 Gen 1 Type A (1x power enabled), HDMI 2.0, RJ-45, Headset, uSD card reader, Smart Card Reader optional, Fingerprint reader optional
Storage Options⁴	2.5-inch, 500 GB, 7200 RPM, SATA, HDD 2.5-inch, 500 GB, 7200 RPM Self Encrypting drive FIPS, SATA, HDD 2.5-inch, 1 TB, 7200 RPM, SATA, HDD 2.5-inch, 2TB, 5400 RPM, SATA, HDD M.2 2230, 128 GB, PCIe NVMe Gen3 x4, SSD M.2 2230, 256 GB, PCIe NVMe Gen3 x4, SSD M.2 2230, 512 GB, PCIe NVMe Gen3 x4, SSD M.2 2280, 256 GB, PCIe NVMe Gen3 x4, SSD M.2 2280, 2 TB, PCIe NVMe Gen3 x4, SSD M.2 2280, 512 GB, PCIe NVMe Gen3 x4, SSD M.2 2280, 1 TB, PCIe NVMe Gen3 x4, SSD M.2 2280, 256 GB, PCIe NVMe Gen3 x4, SSD, self-encrypting drive M.2 2280, 512 GB, PCIe NVMe Gen3 x4, SSD, self-encrypting drive M.2 2280, 1 TB, PCIe NVMe Gen3 x4, SSD, self-encrypting drive M.2 2280, 512 GB, PCIe NVMe Gen3 x4, SSD M.2 2280, 512 GB, PCIe NVMe Gen4 x4, SSD* M.2 2280, 1 TB, PCIe NVMe Gen3 x4, SSD M.2 2280, 1 TB, PCIe NVMe Gen4 x4, SSD* M.2 2280, 2 TB, PCIe NVMe Gen3 x4, SSD M.2 2280, 2 TB, PCIe NVMe Gen4 x4, SSD* *coming soon No RAID	Security⁵	Software Security SafeGuard and Response, powered by VMware Carbon Black and Secureworks provides modern security to prevent, detect and remediate advanced malware and cyber attacks. Suite of technologies include the following: Next Generation Antivirus (NGAV), Endpoint Detection and Response (EDR), Threat Detection and Response (TDR), Managed Endpoint Detection and Response, Incident Management Retainer, Emergency Incident Response SafeID secures end user credentials with a dedicated security chip. Additional features include the following: Trusted Platform Module (TPM) 2.07, self-encrypting storage drives (Opal, FIPS), Smart card keyboard (FIPS). Hardware Security SafeBIOS protects from threats that attack below-the-OS. Includes Dell Off-host BIOS Verification, BIOS Resilience, BIOS Recovery, and additional BIOS Controls. SafeID secures end user credentials with a dedicated security chip. Additional features include the following: Trusted Platform Module (TPM) 2.07, self-encrypting storage drives (Opal, FIPS), Smart card keyboard (FIPS). Physical Security Options: Chassis lock slot support, Chassis Intrusion Switch, Lockable Cable Covers, Supply chain tamper alerts (Check regional availability)
		Dimensions	Rear Height: 0.95 in. (24.05 mm) Front Height: 0.89 in. (22.67 mm) Width: 14.09 in. (357.80 mm) Depth: 9.19 in. (233.30 mm) Weight: 3.95 lb (1.79 kg)
		Battery	4 Cell 64 Whr ExpressCharge Capable Battery 4 Cell 64Whr Long Life, ExpressCharge capable Battery (includes 3 year limited hardware warranty) - coming soon 6 Cell 97 Whr ExpressCharge Capable Battery
		Weight⁶	Starting at 3.95lbs / 1.79 kg
		Power Adaptor	90W E5 Type-C Power Adapter 130W E5 Type-C Power Adapter
		Regulatory and Environmental Compliance⁷	Energy Star / EPEAT Gold Certified
		TAA Configurations available	YES (Check regional availability)

Recommended Accessories

PRECISION 3561

ON-THE-GO



DELL USB-C MOBILE ADAPTER DA310

Compact and portable 7-in-1 USB-C mobile adapter provides superb video, data connectivity and up to 90W power pass-through to your PC.



DELL PRO HYBRID BRIEFCASE BACKPACK, 15" | PO1521HB

Protect your laptop from impact with this earth friendly backpack that is lined with EVA foam cushioning. Easily convert from backpack to briefcase mode and travel with ease.



DELL MOBILE ADAPTER SPEAKERPHONE | MH3021P

Multiport adapter with integrated speakerphone offers an all-in-one connectivity and conferencing solution.

AT THE DESK



DELL THUNDERBOLT DOCK | WD19TB

Work at full speed with Dell's powerful Thunderbolt Dock. Charge your system faster, support up to two 4K displays and connect to your peripherals via a single cable.



DELL ULTRASHARP 27 4K USB-C MONITOR | U2720Q

Experience true color and striking clarity on this 27" 4K monitor with a wide color coverage. Features VESA DisplayHDR™ 400, InfinityEdge and USB-C connectivity with up to 90W power delivery.



DELL PREMIUM WIRELESS KEYBOARD AND MOUSE | KM7321W

Multi-task seamlessly across 3 devices with this premium full size keyboard and sculpted mouse combo with programmable shortcuts and 36 months battery life.

CREATORS AND ENGINEERS



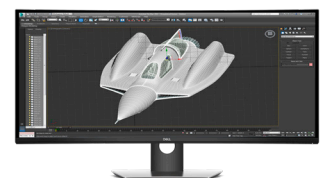
JABRA EVOLVE | 85

Engineered to keep you focused. Our best headset for concentration, collaboration and productivity. All-day comfort with leather-feel ear cushions and on-the-ear design.



3DCONNEXION SPACEMOUSE WIRELESS

3Dconnexion's patented 6-Degrees-of-Freedom (6DoF) sensor is specifically designed to manipulate digital content or camera positions in the industry-leading CAD applications. Simply push, pull, twist or tilt the 3Dconnexion controller cap to intuitively pan, zoom and rotate your 3D drawing.



DELL ULTRASHARP 27 4K PREMIER COLOR MONITOR | UP2720Q

Create on your terms with the world's first 27" 4K monitor* with built-in colorimeter and Thunderbolt™ 3.1.

*Based on Dell analysis of publicly available data, July 2019.

Built for business

Dell Technologies Unified Workspace

Dell Technologies Unified Workspace is the most comprehensive solution to deploy, secure, manage and support virtually all devices from the cloud. We designed this revolutionary solution with intelligence and automation providing you with visibility across the entire endpoint environment. We help you save time, improve user experience, optimize resources and strengthen security.



DEPLOY

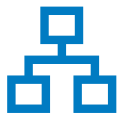
Our modern deployment solution, ProDeploy in the Unified Workspace allows you to revolutionize the way deployment gets done. By spending just one hour for set up, IT can then hand deployment to Dell and have preconfigured systems shipped directly to the end users--wherever they are.



SECURE

Dell Endpoint Security for the Unified Workspace helps you manage growing cyber risks while embracing workforce transformation. With Dell SafeGuard and Response powered by Secureworks, you gain actionable insight to help you quickly and efficiently prevent, detect and respond to cyber-attacks - keeping your environment free from harm.

The 3561 has additional security features such as Intel® Platform Trust Technology, Trusted Platform Module (TPM) 2.0 (Check regional availability), Chassis lock slot support; Support for Computrace and SmartCard Reader; Fingerprint reader or FIPS Fingerprint reader (Check regional availability); camera privacy shutter.



MANAGE

We integrated our hardware management solution Dell Client Command Suite with VMware Workspace ONE, allowing you to take advantage of unified endpoint management (UEM) and manage the firmware, operating system and applications for all devices from the Workspace ONE console. UEM simplifies the management of the entire environment saving IT time from having to work between separate consoles for PCs and phones.



SUPPORT

ProSupport Plus continues to be the only predictive and proactive support in the market. When compared to key competitors, ProSupport Plus with SupportAssist reduced time to resolve a failed hard drive with up to 11x faster time to resolution*

*Based on a Principled Technologies test report, "Spend Less Time and Effort Troubleshooting Laptop Hardware Failures" dated April 2018. Testing omitted by Dell, conducted in the United States. Actual results will vary. Full report: <http://facts.pt/L52XKM>

DELL Technologies

PRECISION 3561

Power within reach



Some options available only in select regions; ISV certification applies to select configurations:

1 Intel Turbo Boost mode only available on Xeon, Core i7 and Core i5 processors. Intel Integrated HD graphics only available with select processors.

2 A 64-bit operating system is required to support 4GB or more of system memory.

3 System memory may be used to support graphics, depending on system memory size and other factors.

4 Hard Drive capacity varies with preloaded material and will be less.

5 Computrace is not a Dell offer. Certain conditions apply. For full details, see terms and conditions at www.absolute.com/en/about/legal/agreements.

6 Weights vary depending on configuration and manufacturing variability.

7 See epeat.net for specific registration rating/status by country. For a complete listing of declarations & certifications, see Dell's regulatory & compliance homepage at dell.com/regulatory_compliance. Availability and terms of Dell Services vary by region. For more information, visit Dell.com/servicecontracts/global; Limited Hardware Warranty available by writing Dell USA LP, Attn: Warranties, One Dell Way, Round Rock, TX 78682 or see www.dell.com/warranty; Onsite Service after Remote Diagnosis: Remote Diagnosis is determination by online/phone technician of cause of issue; may involve customer access to inside of system and multiple or extended sessions. If issue is covered by Limited Hardware Warranty (www.dell.com/warranty) and not resolved remotely, technician and/or part will be dispatched, usually within 1 business day following completion of Remote Diagnosis. Availability varies. Other conditions apply.

Dell, EMC, and other trademarks are trademarks of Dell Inc. or its subsidiaries. Other trademarks may be trademarks of their respective owners. Intel and the Intel logo are trademarks of Intel Corporation in the U.S. and/or other countries. Microsoft and Windows are trademarks of Microsoft Corporation in the U.S. and/or other countries.